

## ANALYSIS OF INDUSTRIAL FLOWS

PROJECT OWNER : PLASTIMETAL

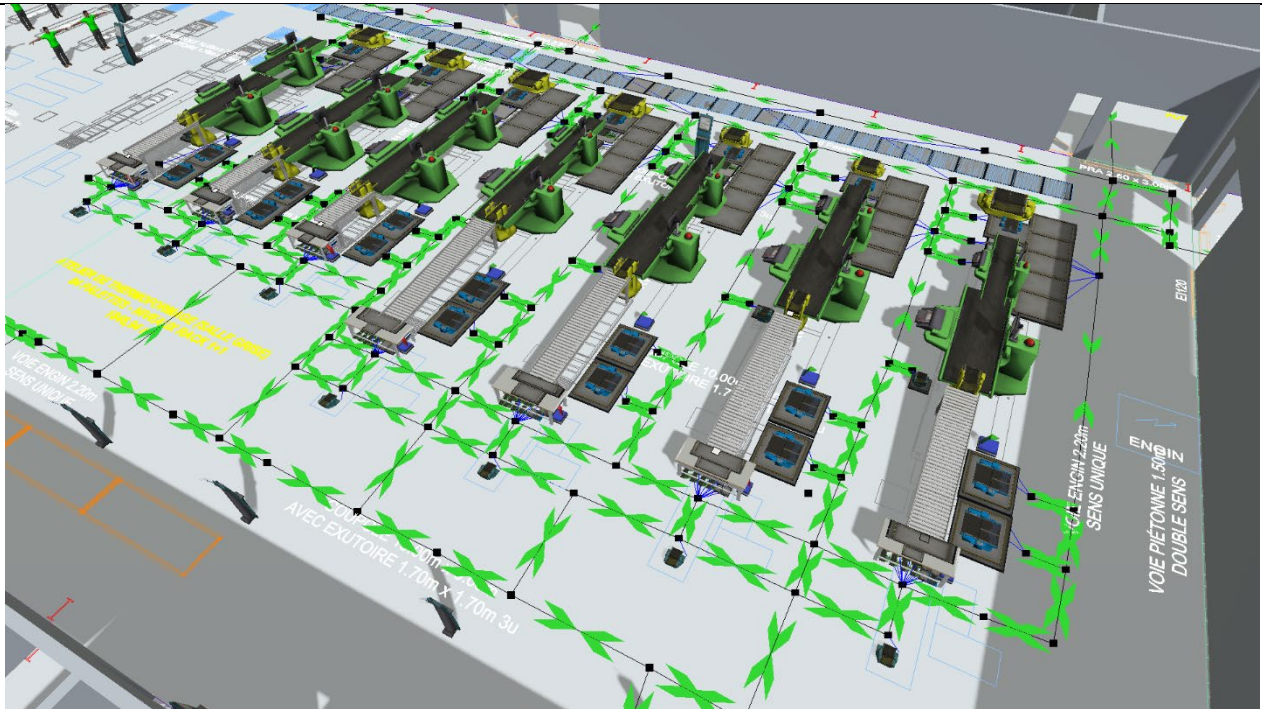
LOCALISATION : La Colombe

PROJECT :

AREA : m<sup>2</sup>

Study and definition of the strategy for the organisation of flows and the organisation of workshops in the context of a building construction project in the municipality of La Colombe

DATE : 2019



PLASTIMETAL wanted to test and validate the future organisation of flows and the layout of workstations to validate the plans and dimensions of this new building as part of the transfer of its activity to a new building built by the company.

Oreka ingénierie carried out an analysis and study of the flows and processes to design the Flexsim 3D digital model of the new site, especially the production lines, supply stock and filming station, which represented the probable blocking points.

The creation of the Flexsim model of the workshop was intended to put into perspective the movements of the operators (here in charge of several lines) and visualise the bottlenecks. Oreka also created different scenarios to test the influence of organisational changes requested by the client.

The study resulted in a list of recommendations for the future organisation of production.