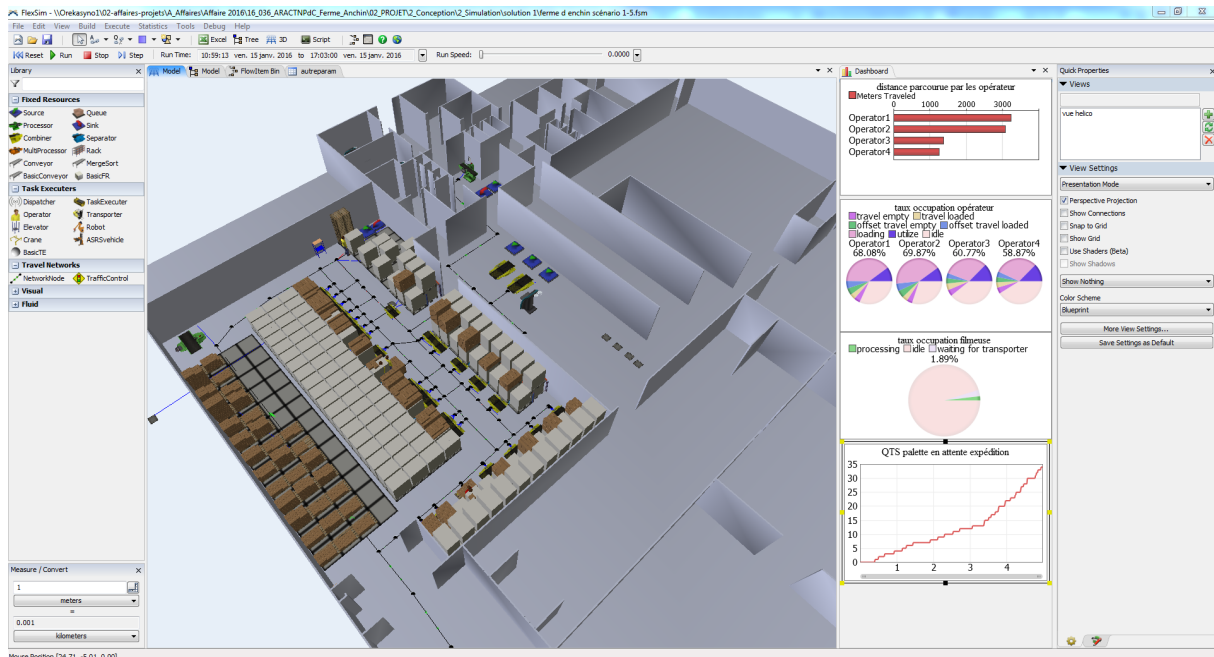




FLOW MANAGEMENT



PROJECT OWNER : Ferme d'Enchin

PROJECT : E Flow management study on the LESSAY site as part of the project to reorganise the refrigerated storage and soup piking procedure.

LOCALISATION : Lievin (62)

DATE : 2016

As part of its refrigerated storage redevelopment project, Destombes wanted to anticipate the problems inherent in the existing space, storage areas and optimisation of the operators' work.

The Oreka ingénierie study made it possible to choose the optimum scenario by taking into account the following criteria:

To be able to distribute the different operator tasks while balancing their occupancy rates and limiting unnecessary travel.

To be able to take into account different scenarios of organisation, material flow (AC), finished product flow and people in the workspace.

To ensure compliance with the last-in, last-out principle.

To ensure future working conditions that will allow employees to age in the company and remain in employment.

Number of machines: 9
 Number of products : 30
 Number of operators : 15