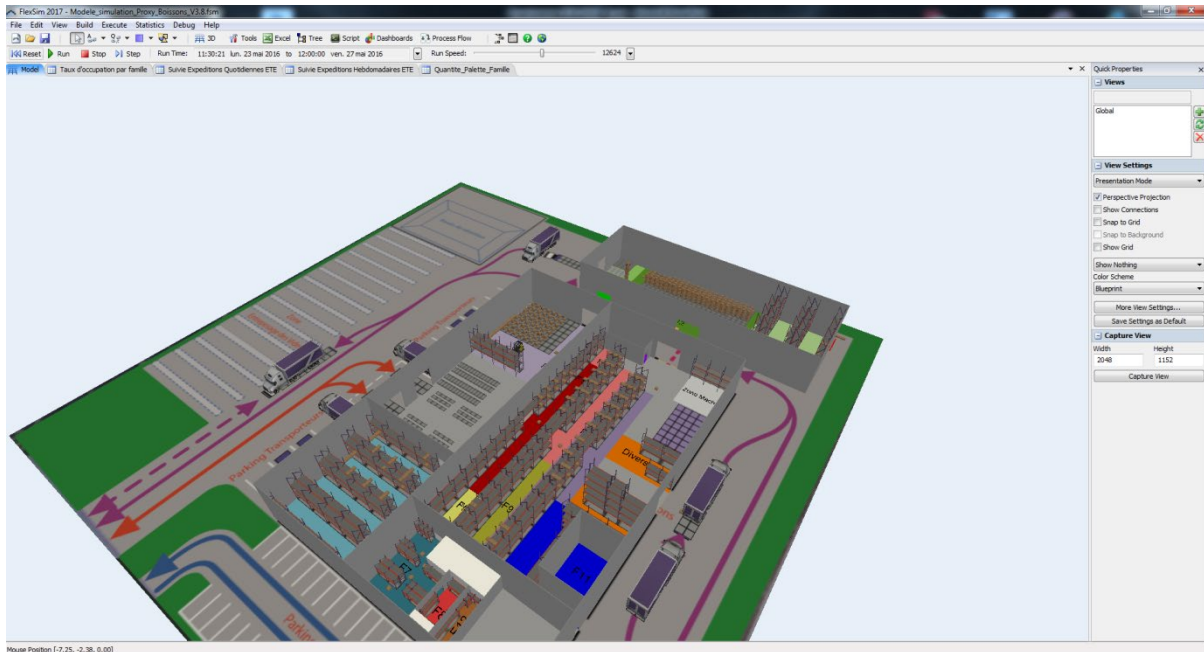




## PROXY BOISSON - Study of flow management of the distribution site located in Giberville



**PROJECT OWNER :** PROXY BOISSON

**PROJECT :** Study and definition of the strategy for organising flows and the organisation of storage within the framework of a building redevelopment project in the municipality of GIBERVILLE.

**LOCALISATION :** GIBERVILLE

**DATE :** 2017/2018

PROXY BOISSON wanted to define and validate future strategies in building investment, improving the work tool and managing the work time according to activities.

Oreka ingénierie carried out an analysis and study of the flows and processes to design the Flexsim 3D digital model of the site, particularly the stocks and order preparation.

The creation of the Flexsim model warehouse was intended to put into perspective the movements of the operators and to dimension and organise the storage resources. Oreka also created different scenarios to test the influence of organisational changes requested by the client.

The study resulted in a list of recommendations for the future organisation of storage.