

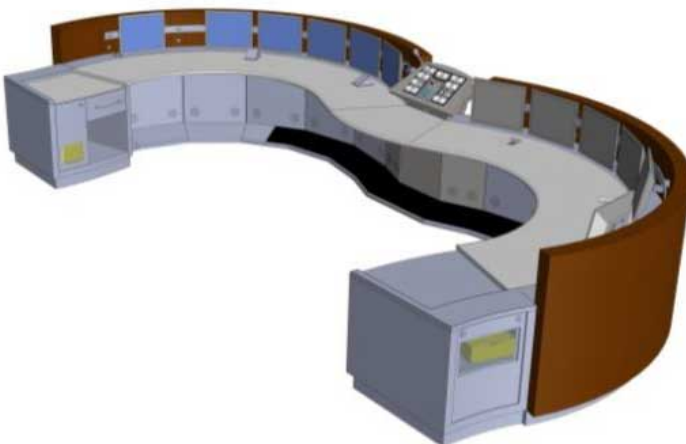
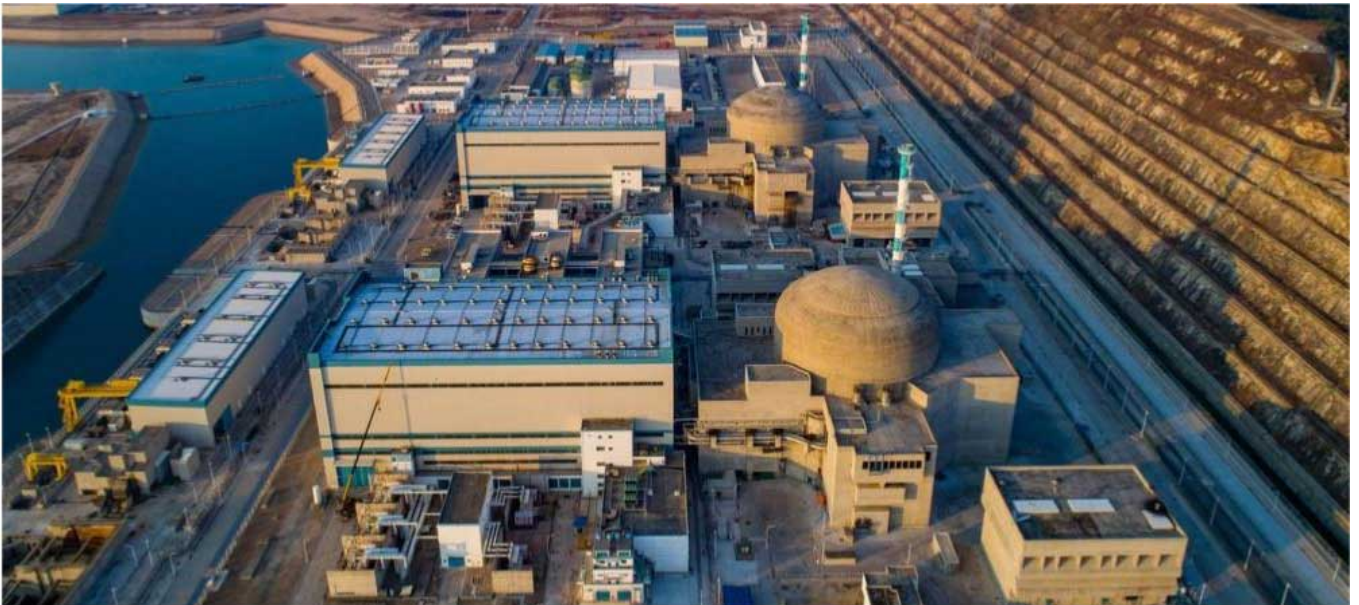
PM – FITTING OUT THE DRIVER'S ROOM

PROJECT OWNER : AREVA

LOCALISATION : Taishan (Chine)

PROJECT : Design studies for the furniture of the control rooms and manufacturing follow-up

DATE : 2010



OREKA Ingénierie carried out the detailed project studies and manufacturing studies within a GME set up to ensure the studies, manufacturing and on-site assistance for the installation of the furniture for 2 control rooms and the "simulator" control room for the EPR - TAISHAN project in CHINA. OREKA Ingénierie managed all the test phases of the furniture with their integrated SIEMENS equipment for the GMEs.

OREKA Ingénierie also realised, with EDF DIRCO and DIRMED, architectural programming missions for the fitting out of offices and workshops, laboratories and for EDF FA3, technical analysis and office fitting out the mission for POE/FA3.

(acronymes à expliquer ??)